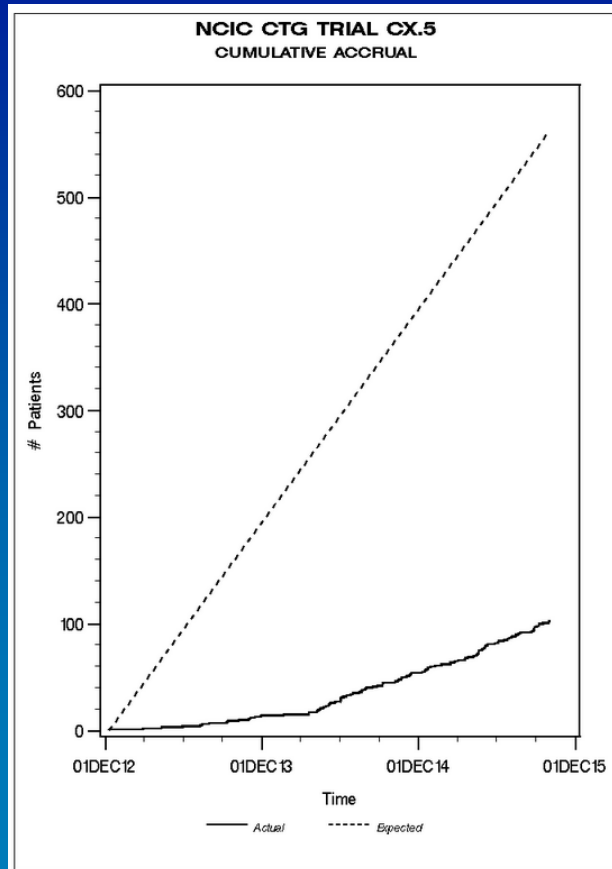


SHAPE/CX.5 Accrual as of Oct 5, 2015

Country	# Patients Accrued
Austria	5
Belgium	4
Canada	68
China	2
France	7
Ireland	4
South Korea	7
The Netherlands	5
United Kingdom	1
Total	103

SHAPE/CX.5 Cumulative Accrual as of Oct 5, 2015



SHAPE/CX.5 Sites Active as of Oct 5, 2015

Country	# Sites Activated
Austria	7
Belgium	5
Canada	17
China	1
France	15
Ireland	1
South Korea	1
The Netherlands	1
United Kingdom	8
Total	56