

Gynecologic Cancer InterGroup
Cervix Cancer Research Network



Welcome to TACO!

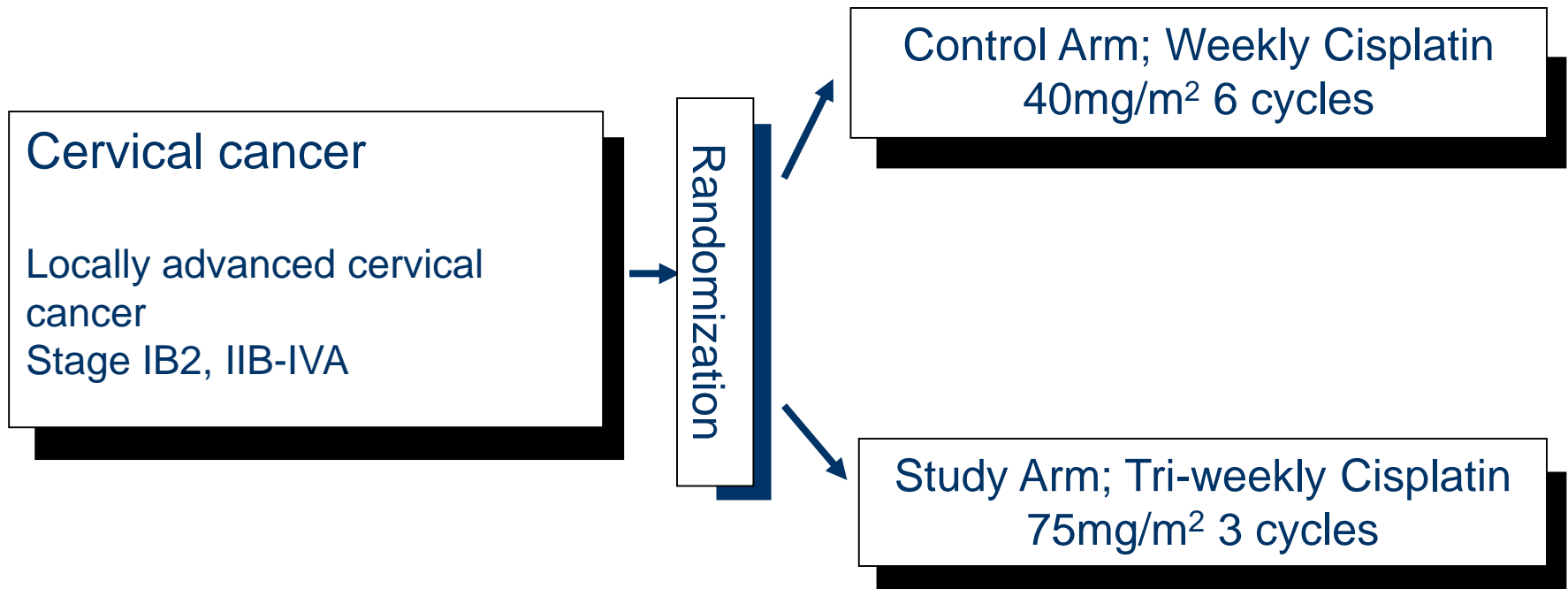


GCIG/KGOG1027/TGCS2012: Randomized Phase III Clinical
Trial Comparing Weekly vs Tri-weekly Cisplatin Based
Concurrent Chemoradiation in Locally Advanced Cervical
Cancer

David Gaffney MDPHD on behalf of Sang Young Ryu, MD
Korea Cancer Center Hospital
Seoul, Korea

TACO

(Tri-weekly Administration of Cisplatin in Locally Advanced Cervical Cancer)



Chemoradiation

- 5 RCTs; 30-50% improvement of survival

	Regimen	Cisplatin	No. of cycle
GOG 85	FP	50 mg/m ² /3wk	2
GOG120	W-P	40 mg/m ² /wk	6
	FP	50 mg/m ² /4wk	2
GOG 123	W-P	40 mg/m ² /wk	6
SWOG 8797	FP	70 mg/m ² /3wk	4
RTOG 90-01	FP	75 mg/m ² /3wk	3

Victory of Weekly Cisplatin 40mg/m²

- Weekly cisplatin 40 mg/m²
 - Favored because convenient, equally efficacious, less toxic

- GOG 120

Arm 1; W-cis #6 ^{vs} FP #3

Comparable outcome

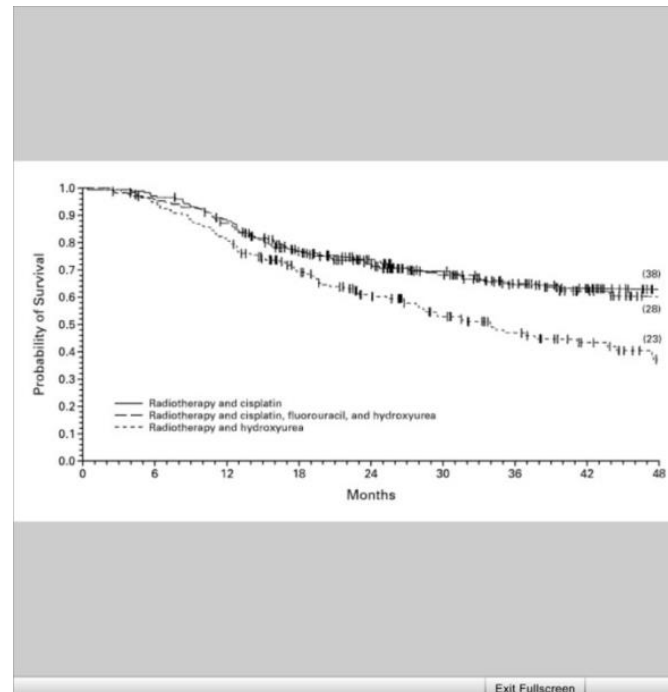


Figure 2. Kaplan-Meier Estimates of Overall Survival.

The overall survival rate was significantly higher among patients in the group given radiotherapy combined with cisplatin therapy (117 of 176, P=0.004) and among patients in the group given radiotherapy combined with treatment with cisplatin, fluorouracil, and hydroxyurea (116 of 173, P=0.002) than among patients in the group given radiotherapy combined with hydroxyurea therapy (88 of 177). Tick marks indicate patients who died. Numbers in parentheses are the numbers of patients at risk at four years.

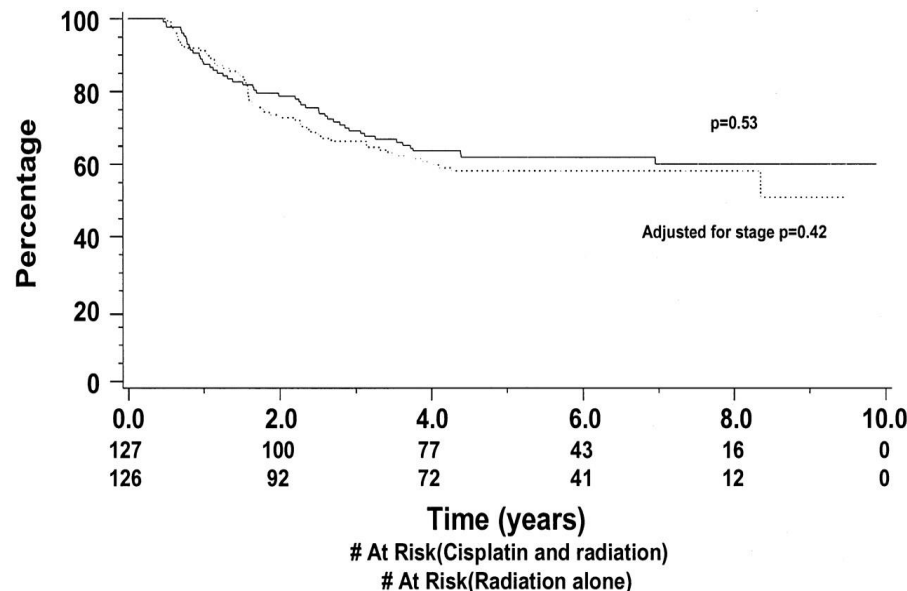
NCIC trial

- **Sixth RTC: NCI Canada, 2002**

259 patients, Stage IB to IVA, > 5cm, or pelvic lymph node (+)

W-Cisplatin 40 mg/m² vs RT only

- NO significant difference in PFS and 5YSR



Pearcey R et al. JCO 2002;20:966-972

Is Weekly-cisplatin an optimal dose ?

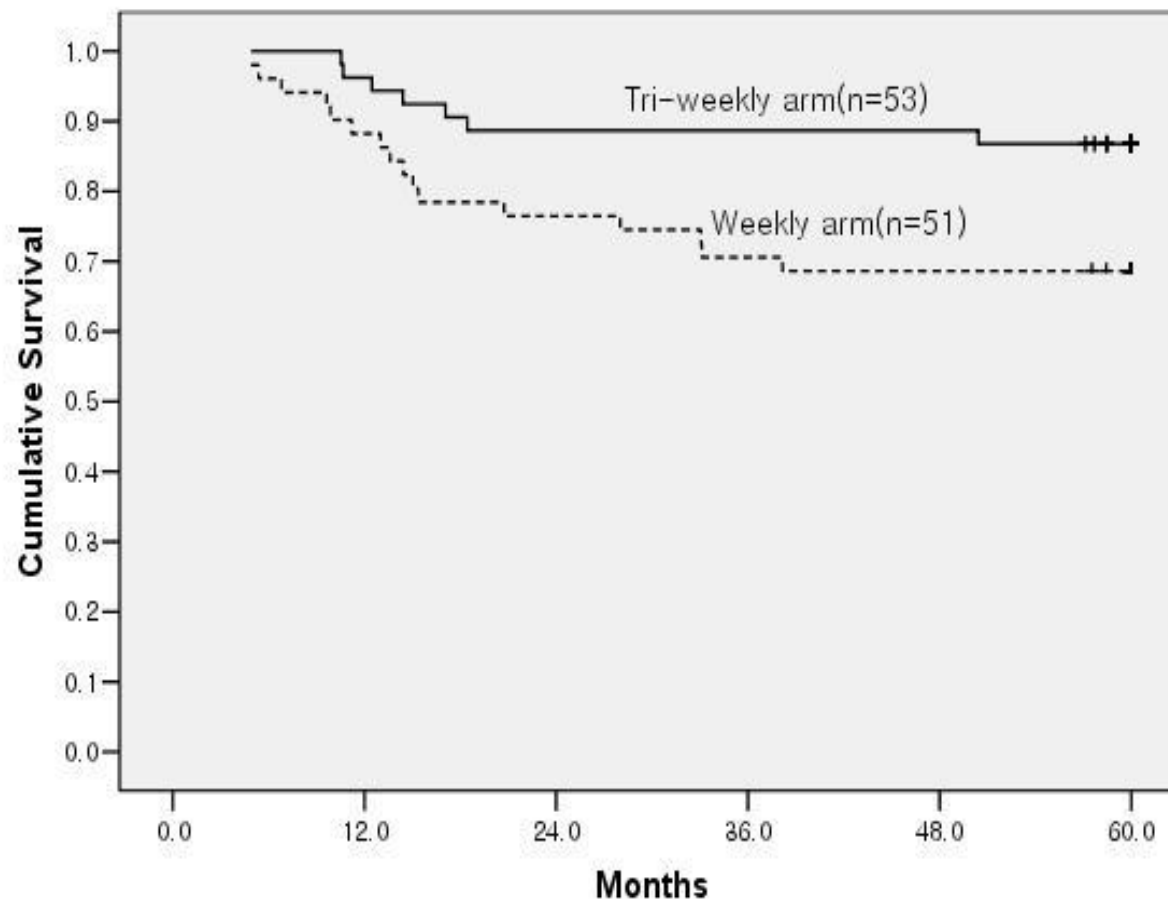
Cervix Cancer Education Symposium, January 2019

Gynecologic Cancer InterGroup Cervix Cancer Research Network



Ryu et al., IJROB 2011

5YSR ; 88% vs 66% ; HR 0.375 , 95% CI(0.154-0.914) $p=0.03$



Gynecologic Cancer InterGroup Cervix Cancer Research Network

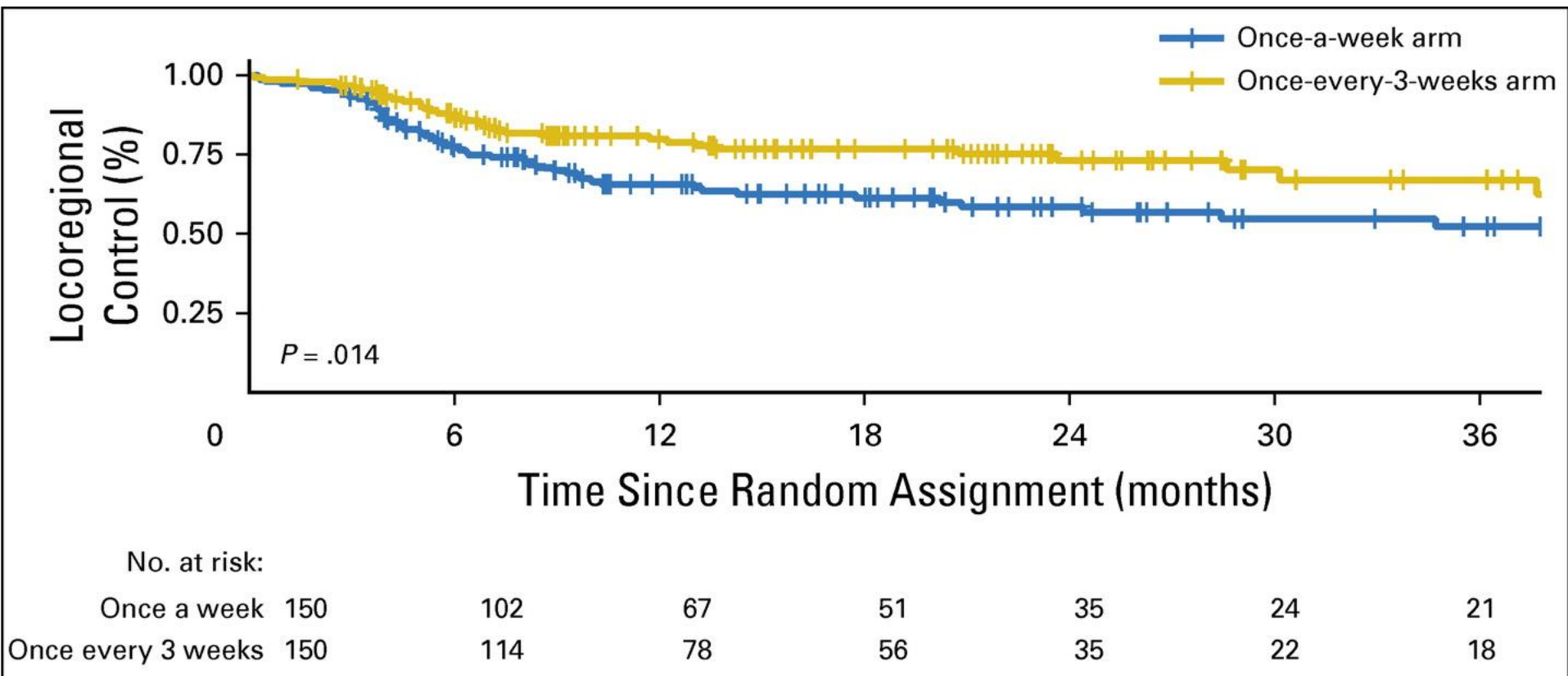


Tri-weekly CRT Toxicity (Ryu et al., IJROBP 2011)

	Weekly(%) (n=51)		Tri-weekly(%) (n=53)		P-value
	Grade 1-2	Grade 3-4	Grade1-2	Grade3-4	
Neutropenia	20(38.5)	21(40.4)	23(43.4)	12(22.6)	P< 0.05
Thrombocytopenia	13(25.0)	5(9.6)	3(5.7)	3(5.7)	
Nausea	43(82.7)	3(5.8)	46(86.8)	2(3.8)	
Vomiting	13(25.0)	0	11(20.8)	0	
Nephrotoxicity	8(15.4)	0	15(28.3)	1(1.8)	
Neurosensory	5(9.6)	0	2(3.8)	0	
Alopecia	13(25.0)	0	17(32.1))	0	

Once-a-Week Versus Once-Every-3-Weeks Cisplatin Chemoradiation for Locally Advanced Head and Neck Cancer: A Phase III Randomized Noninferiority Trial

Noronha et al, JCO, 2018



What we want to prove is...

- Hypothesis
 - Peak concentration > Not exposure time
 - Synergy of chemoradiation
 - Eliminate the micrometastasis

Weekly cisplatin



ICR

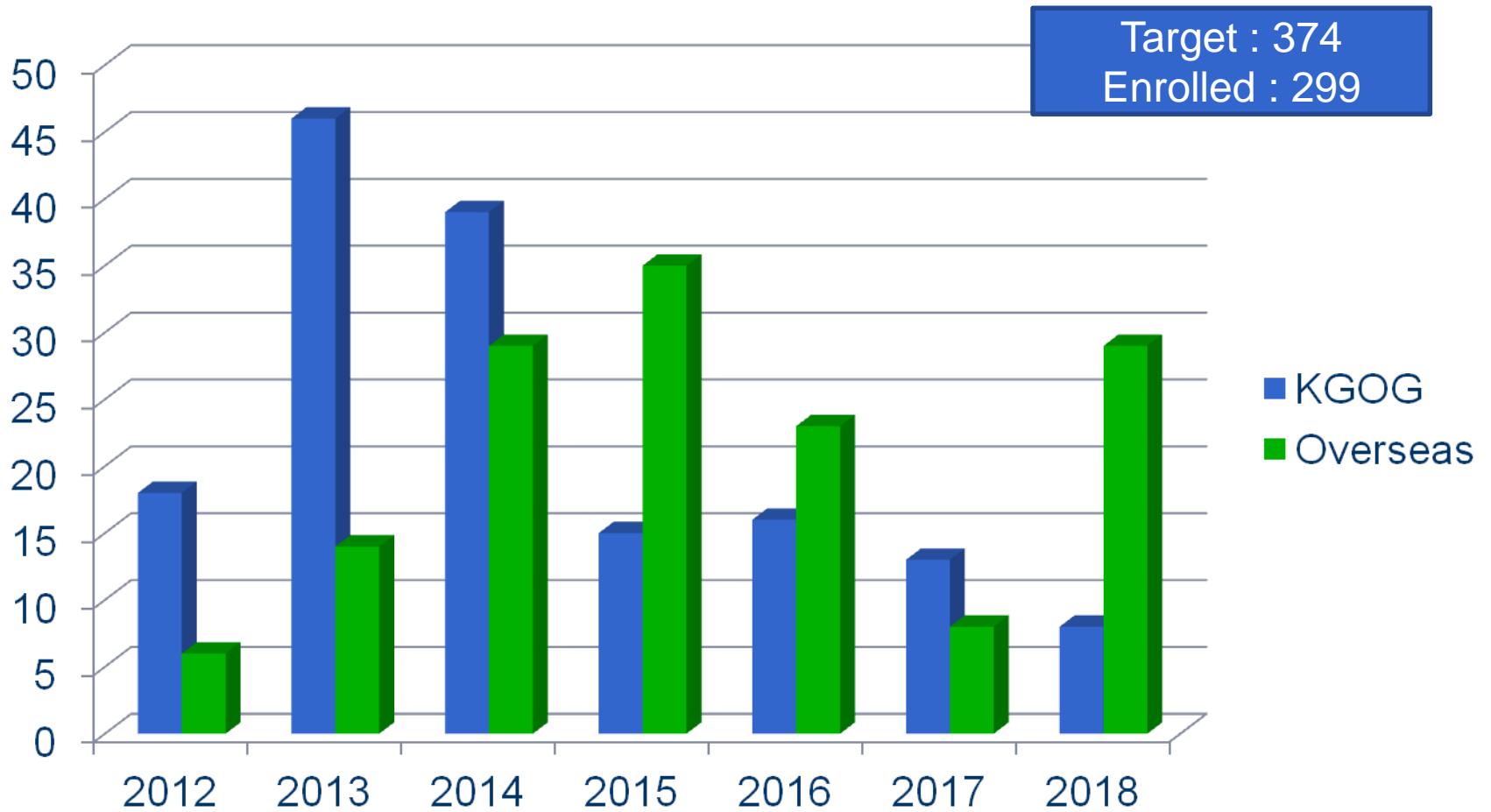
Tri-weekly cisplatin



ICR

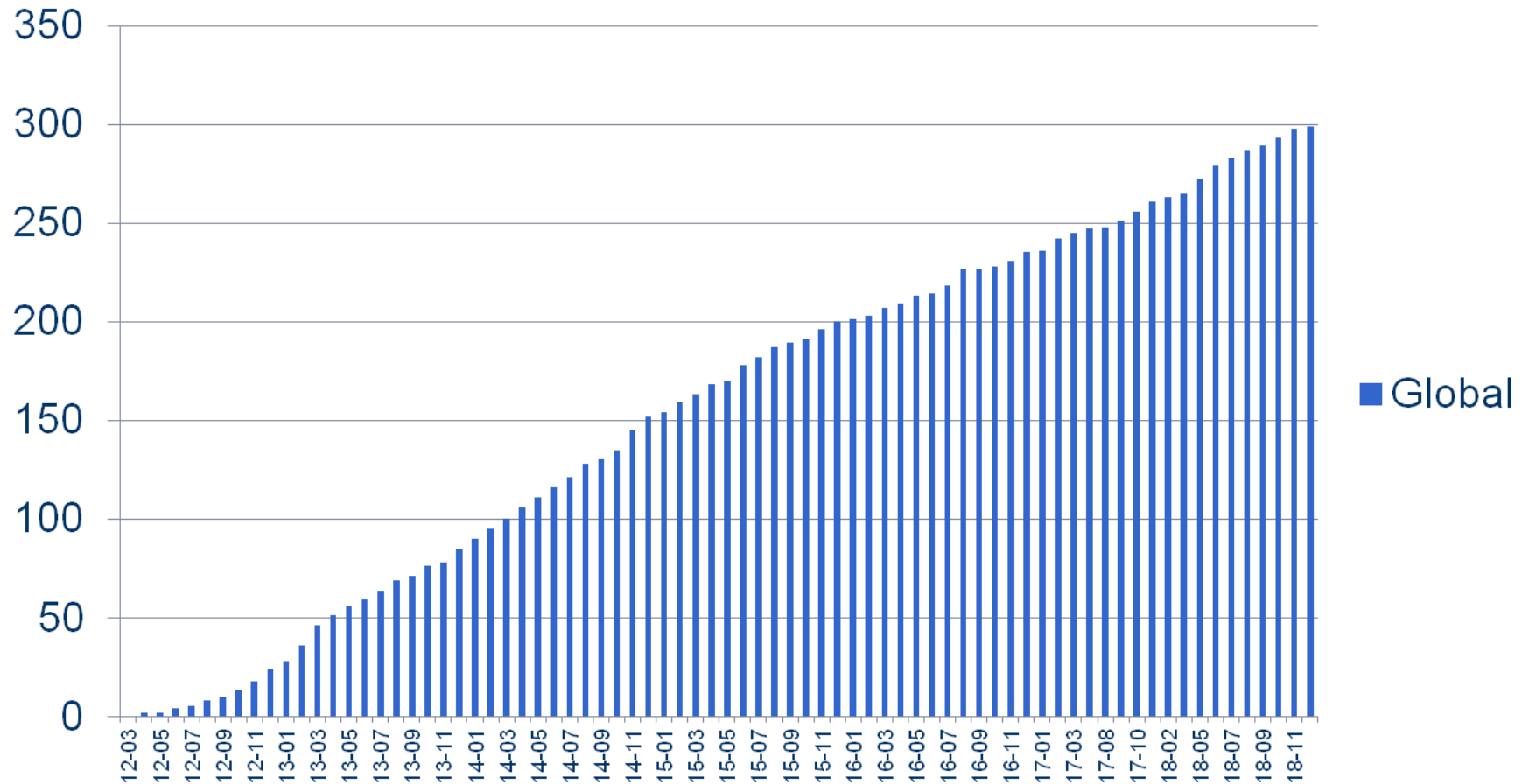
- Statistics (revised)
 - Increase of 5YSR: 65-> 77%
 - 80% power, Two-sided test type I error=5%
 - Expected HR=0.607 (39% reduction)
 - Accrual time; 48 months
 - 168/arm , 10% loss,
 - Total; 374pts (Current; 260cases)

Accrual of TACO(2018.12.31)



Accrual of TACO

Global



TACO Monitoring

- QC monitoring/Audit
- Data Management/e-Velos
- RT QA

QC monitoring in Ramathibodi Hospital



RT-QA (GCIG-CCRN)

- Pretreatment AP/Lat portal film review
 - within 24 hours
- Post treatment RT review
 - Biennial meeting
 - Acceptable/Deviation acceptable/Unacceptable

Gynecologic Cancer InterGroup Cervix Cancer Research Network

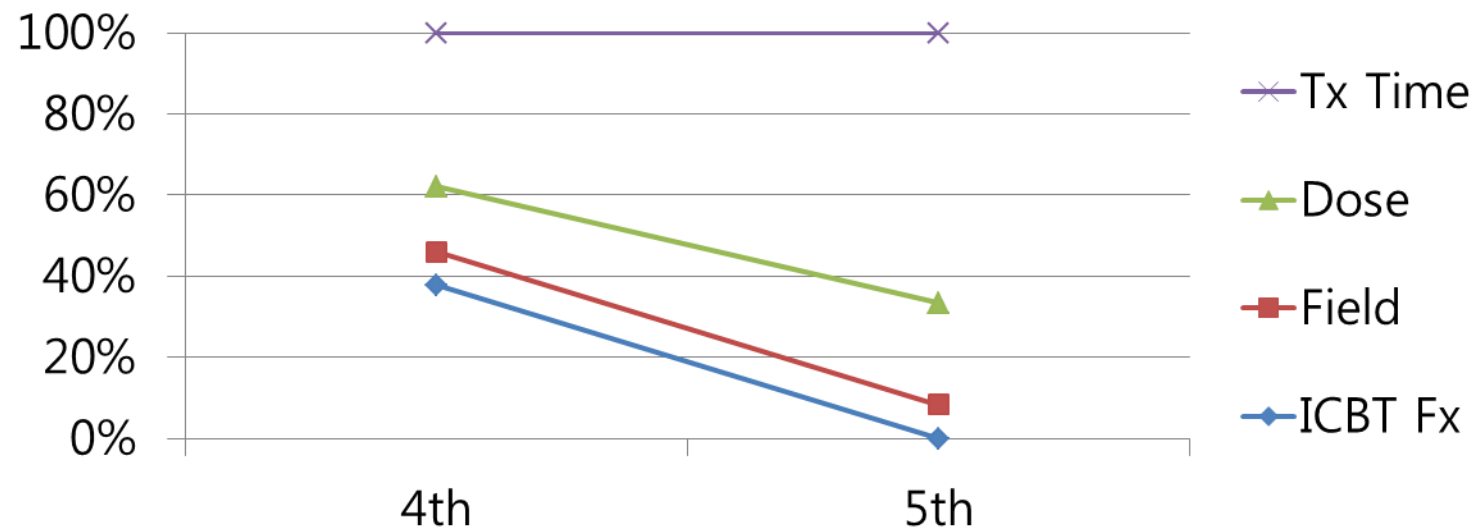


RT QA in TACO



Cervix Cancer Education Symposium, January 2019

RT QA in TACO

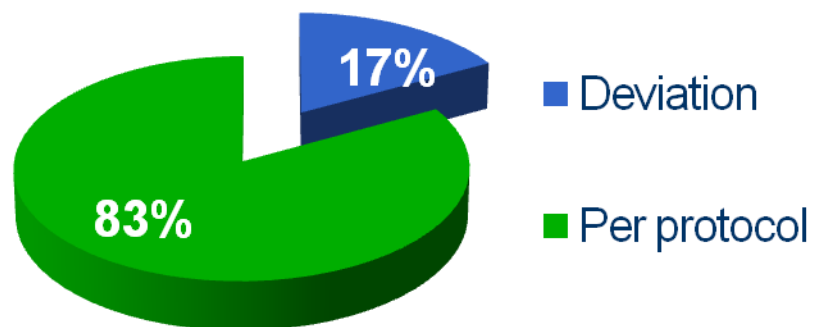


Gynecologic Cancer InterGroup Cervix Cancer Research Network

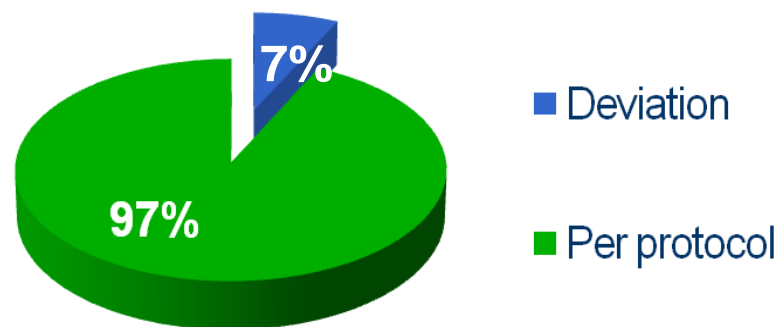


1 st QC Deviation	2 nd QC Deviation
17%	7%

1st QC Monitoring



2nd QC Monitoring



Cervix Cancer Education Symposium, January 2019

TACO GONNA CHANGE STANDARD!

KGOG 12 sites

Thailand 1 site

Vietnam 1 site

China 2 sites



Tri-weekly cisplatin
may be better than
current standard
weekly cisplatin-
CRT.

Thank you for your attention.